

DROP WEIGHT TEAR TESTER [DWTT]



www.pragyaequipments.com



INTRODUCTION

"PRAGYA" developed its first Drop Weight Tear Tester (DWTT) in the year 1999 for the maximum energy level of 30,000 Joules. Over the time, Pragya's commitment to excellence resulted in development of fully automatic PLC controlled DWTT with Hydraulic Shock Absorbers for *drop weight tear testing* of "Specimen" according to the standards ASTM-E436, API-RP5L3, ASTM-E208 and DIN EN 10274.

Now we offer three different automatic PLC controlled DWTTs ;

- PRTT - 30000 J
- PRTT - 55000 J
- PRTT - 80000 J

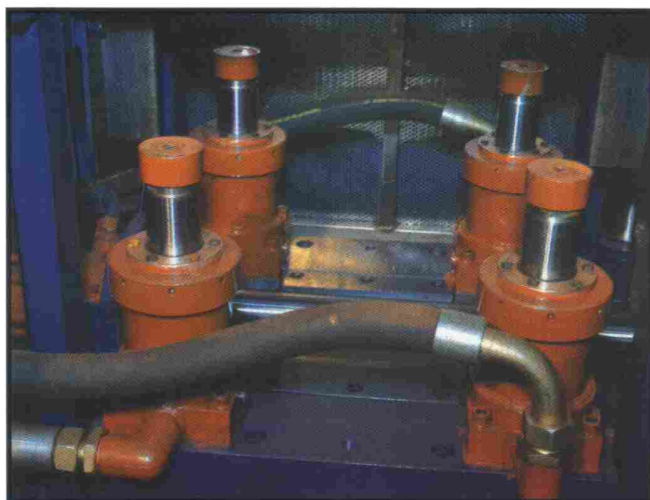
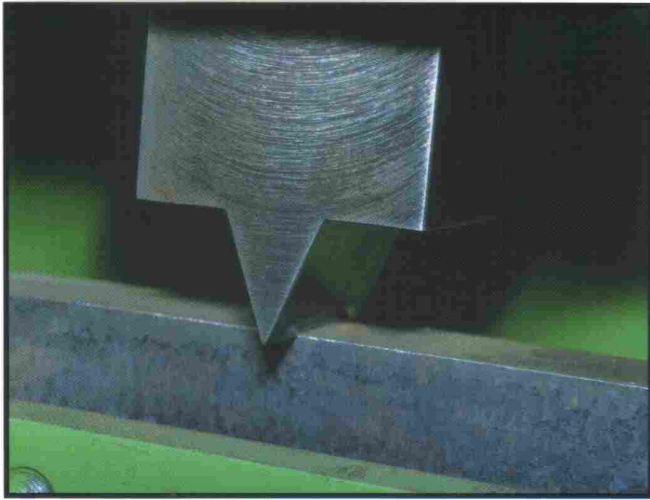
Pragya's DWTT is robust in construction, smooth in operation and is practically maintenance free. The machine is supplied with auxiliary equipments (optional). i.e. Hydraulic Notch Making Press and Deep Freezer to cool the specimen up to minus (-) 80°C.

SALIENT FEATURES :

- Drop weight tear testing of "Specimen" according to standards as per ASTM-E436, API-RP5L3, ASTM-E208 and DIN EN 10274.
- Touch-screen Panel with electronic display of height, energy drop weight and dropping speed at predetermined parameters.
- The stepless adjustable drop height is reached automatically after input of drop weight and energy.
- Drop weight is divided in individual weights to adjust drop energy.
- Modular frame design with stainless steel pillars and doors.
- Four high capacity hydraulic shock absorbers with accumulators for safe absorption of the excess drop energy.
- Hydraulic specimen feeding device, equipped outside of testing area.
- Easily removable bending tools (Hammer).

SAFETY :

- Electrical and mechanical safety interlocking. Testing is possible only after checking of all safety parameters, to comply with OSHA requirements (USA).
- Exclusive safety bars provided to ensure human safety in case of catastrophic failures.





TECHNICAL SPECIFICATIONS

| Model | PRTT-30000 J | PRTT-55000 J | PRTT-80000 J | |
|----------------------------------|-------------------|-------------------|-------------------|------|
| Maximum Impact Energy (J) | 30000 | 55000 | 80000 | |
| Minimum Impact Energy (J) | 6500 | 7000 | 15000 | |
| Maximum Height (mm) | 3100 | 4000 | 5100 | |
| Maximum Plate Thickness (mm) | 38 | 50 | 50 | |
| Raising Height Accuracy (mm) | ± 5 | ± 5 | ± 5 | |
| Maximum Strike Weight (kg) | 1000 | 1400 | 1600 | |
| Strike Weight Accuracy (%) | ± 1 | ± 1 | ± 1 | |
| Striker Velocity (m/sec) | 3.0 to 7.0 | 4.0 to 9.0 | 4.0 to 9.9 | |
| Specimen Alignment Accuracy (mm) | ± 1 | ± 1 | ± 1 | |
| Base Size L x W x H (mm) | 1250 x 1250 x 200 | 1300 x 1300 x 200 | 1500 x 1500 x 200 | |
| Dimension | L (mm) | 3000 | 3000 | 3500 |
| | W (mm) | 1300 | 1400 | 1600 |
| | H (mm) | 5500 | 7000 | 8500 |
| Weight (kg) | 7600 | 10000 | 14500 | |

"PRAGYA" is also engaged in manufacturing and export of Terminal, Handling and Testing equipments for SAW/SPIRAL pipe plants and CR/HR steel mills since last 17 years.

We also offer following equipments :

- Pipe carriage/trolley for UT and X-ray testing of pipes.
- Pipe rotator, pipe conveyor, pipe transfer trolley, pipe lifting hanger and work aids.
- Welding boom, X-ray and UT boom and post-bending rolls.
- Pipe sizing press, online decoilers, plate flatners/levelers and hydraulic shears.
- Cut to length lines for HR/CR coils with Edge slitters/trimmers and scrap winders.
- Coil handling equipments i.e.'C' Hooks, coil grab/tong, coil upender/downender, coil car, coil transfer trolley, slab lifting tong etc.
- Tube finning machine and finned tube heat exchangers/radiators.

PRAGYA EQUIPMENTS PVT. LTD.

110, Modi Tower, M.T.H. Compound, Indore - 452 004 (India) Phone : +91-731-4084521, 2430399
Fax : +91-731-2430402, +91-7292-253769 Mob.: (L.C. Tolani) +91-98260-47777 (L. R. Jawere) +91-93295-45257
e-mail : pragyahydro@Satyam.net.in • e-mail : lctolani@gmail.com • www.pragyaequipments.com