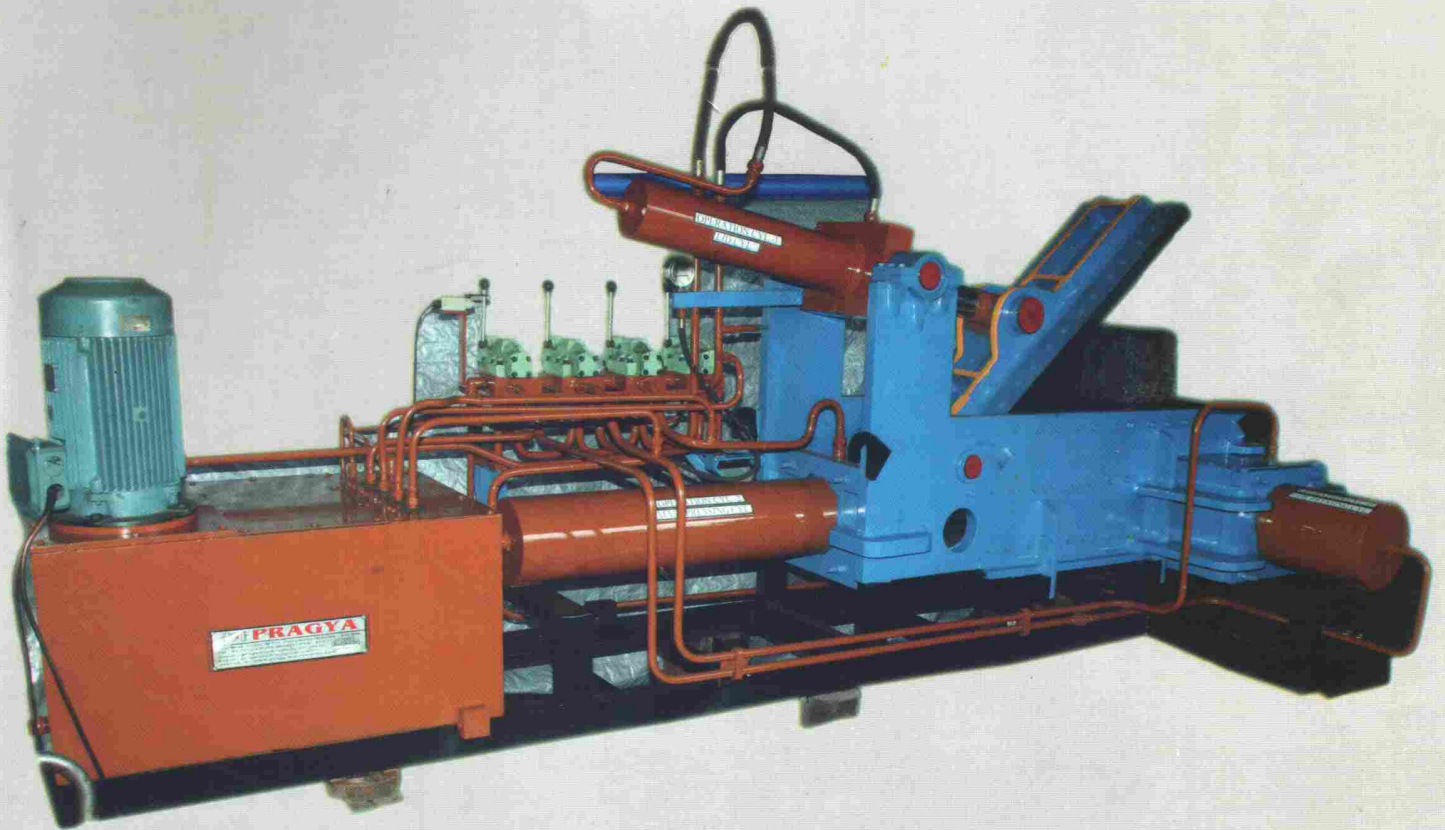


# SCRAP BALING PRESSES



PRAGYA EQUIPMENTS PVT. LTD.



## **INTRODUCTION**

PRAGYA Make Hydraulic Scrap Baling Presses and have a reputation of excellence for quality, workmanship and reliability in the past 15 years. Our presses have been designed for a very long operational life. Complete care is taken towards their production ability and our press is surely the most productive press.

## **DETAILS**

PRAGYA'S Hydraulic Scrap Baling Press are available in Single compression, Double compression (with ejector cylinder & manual door), Triple compression and Vertical Scrap baling press which are suitable for processing all type of ferrous and non-ferrous scrap like-stainless steel, M.S. Scrap, aluminium, brass, copper and other industrial tin sheets. These presses are capable of compressing various leftover, metal structural, waste cloth, HDPE / PP woven sack bags, Industrial & Agricultural waste, animal feed block (Husk/Straw), Sugar cane, flower, Film cutting etc.

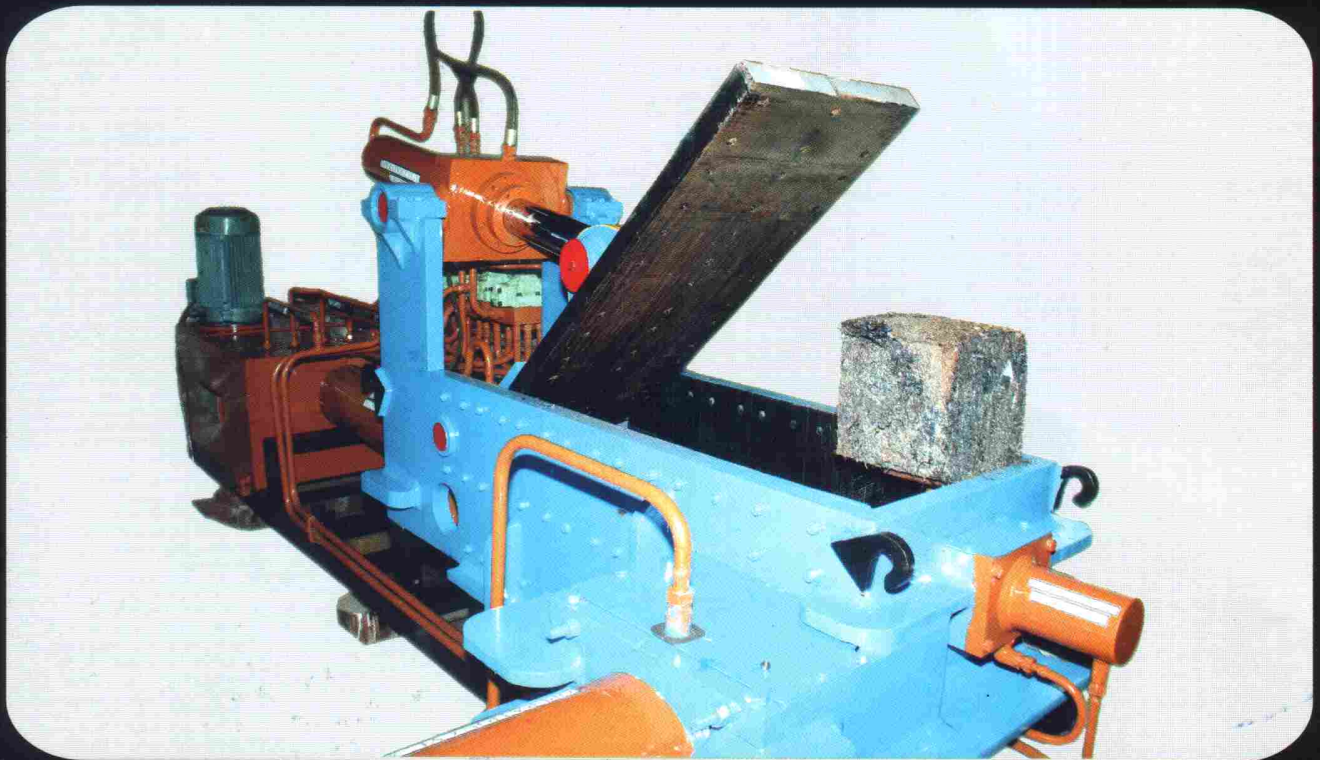
The "Baling Press Bale" produced by our presses have a very high specific density and hence you can feed more material by weight into the furnace. Besides the optimization in feeding the furnace, bales are also convenient to store and reduces the transportation cost, labour cost, time etc.

## **Salient Features :**

- The Production capacity ranges from 1 ton per hour and more if desired.
- The operation of press is done by hand lever operated, semi automatic & fully automatic PLC." Programmable Logic Control " (PLC) provided in our baling presses are of international standard made for offering maximum production flexibility & full compatibility.
- The Weight of bale ranges 10 Kgs. - 500 Kgs. and more if desired.
- The major components used in machine are of international reputed make and are easily available in India & abroad.
- Shearing blades and replaceable wear-resistance plate can be provided for the long life of the feeding chamber.
- High speed & fully automatic operation.
- Bale chamber can be designed and modified according to required bale weight, size & density.
- Full bale ejection from the chamber.
- All machines are rigorously tested prior to the delivery.



# SCRAP BALING PRESSES (TRIPLE COMPRESSION)





# TECHNICAL SPECIFICATION OF TRIPLE COMPRESSION BALING PRESS

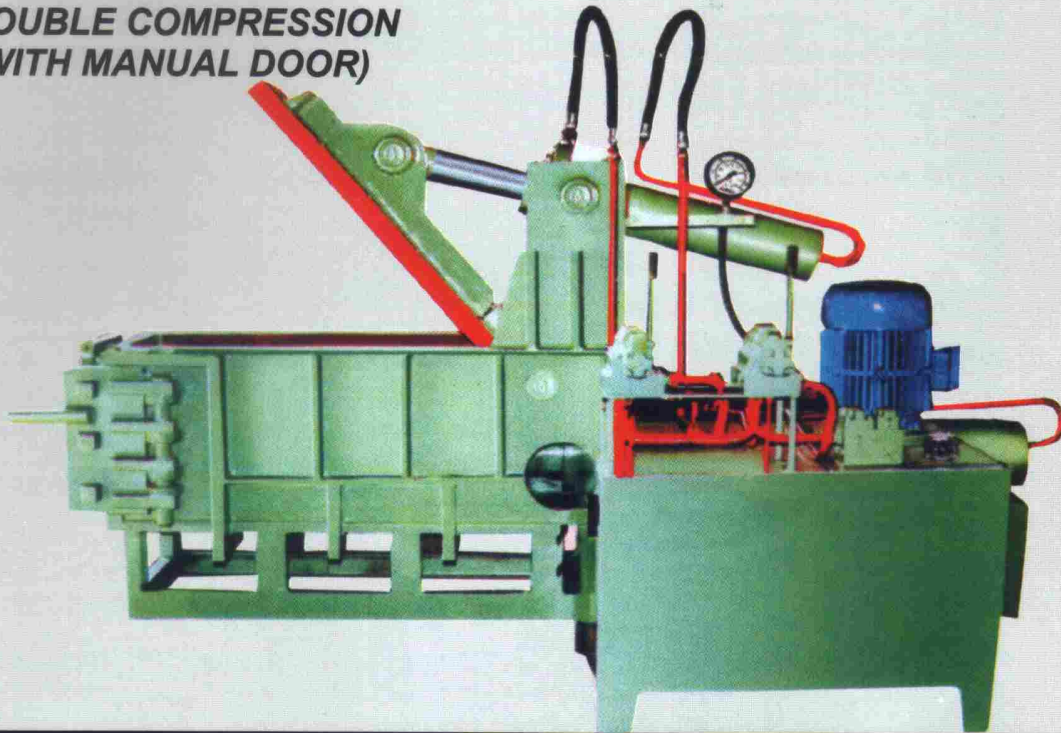
MODEL NO.	PETCP-300	PETCP-310	PETCP-315	PETCP-320	PETCP-330	PETCP-340	PETCP-350	PETCP-360	PETCP-370
BALING CHAMBER SIZE (H x W x L)	20"x20" x 50"	24"x24" x 50"	24"x28" x 55"	24"x30" x 60"	30"x36" x 60"	30"x40" x 60"	30"x40"x72"	36"x40"x84"	40"x40"x84"
BALE SIZE H x W x L (inches)	10"x10" x 8-10"	14"x14"	15"x15"	16"x16"	16"x16"	18"x18"	18"x18"	22"x22"	24"x24"
WEIGHT OF THE BALE (Approx. in Kgs.)	35-45	40-55	60-75	70-90	110-130	130-145	150-190	250-290	300-350
ELECTRIC MOTOR	20 H.P.	20 H.P.	25 H.P.	30 H.P.	30 H.P.	40 H.P.	40 H.P.	60 H.P.	100 H.P.
FORCE ON LID CYLINDER (Tons)	40	40	40	50	50	75	75	100	120
FORCE ON MAIN CYLINDER (Tons)	75	75	75	80	80	100	100	125	150
FORCE ON SIDE CYLINDER (Tons)	100	100	100	120	120	150	150	200	250
FORCE ON EJECTOR CYLINDER (Tons)	12	12	12	12	12	12	15 2 No.'s	15 2 No.'s	20 2 No.'s
PRESSING TIME (Seconds)	70-80	70-90	70-90	70-90	90-110	90-110	90-110	100-120	100-120
OIL TANK CAPACITY (Ltrs.)	400	400	500	600	650	650	700	1500	1800
WEIGHT OF THE MACHINE Approx (MT)	4.0 - 4.5	5.0 - 5.5	5.5 - 6.0	6.0 - 7.0	7.5 - 8.0	9.0 - 10.0	11.0 - 12.0	17.5 - 18.0	25.0
OIL DRIVE PUMP	GEAR CUM RADIAL PISTON PUMP								
WORKING LIQUID	HYDROL / ENCLO - 68								
BODY	FABRICATED								
OPERATION	HAND LEVER OPERATED / PUSH BUTTON OPERATED / PLC CONTROL								
HARD LINER PLATES	OPTIONAL	OPTIONAL	OPTIONAL	PROVIDED	PROVIDED	PROVIDED	PROVIDED	PROVIDED	PROVIDED
SHEARING BLADE	OPTIONAL	OPTIONAL	OPTIONAL	OPTIONAL	OPTIONAL	OPTIONAL	OPTIONAL	OPTIONAL	OPTIONAL
MOTOR STARTER	OPTIONAL	OPTIONAL	OPTIONAL	OPTIONAL	OPTIONAL	OPTIONAL	OPTIONAL	OPTIONAL	OPTIONAL
HOPPER	OPTIONAL	OPTIONAL	OPTIONAL	OPTIONAL	OPTIONAL	OPTIONAL	OPTIONAL	OPTIONAL	OPTIONAL

- Chamber bale size may be increased / decreased as per customer requirement.
- We reserve the right to alter the specification and dimensions without prior notice.

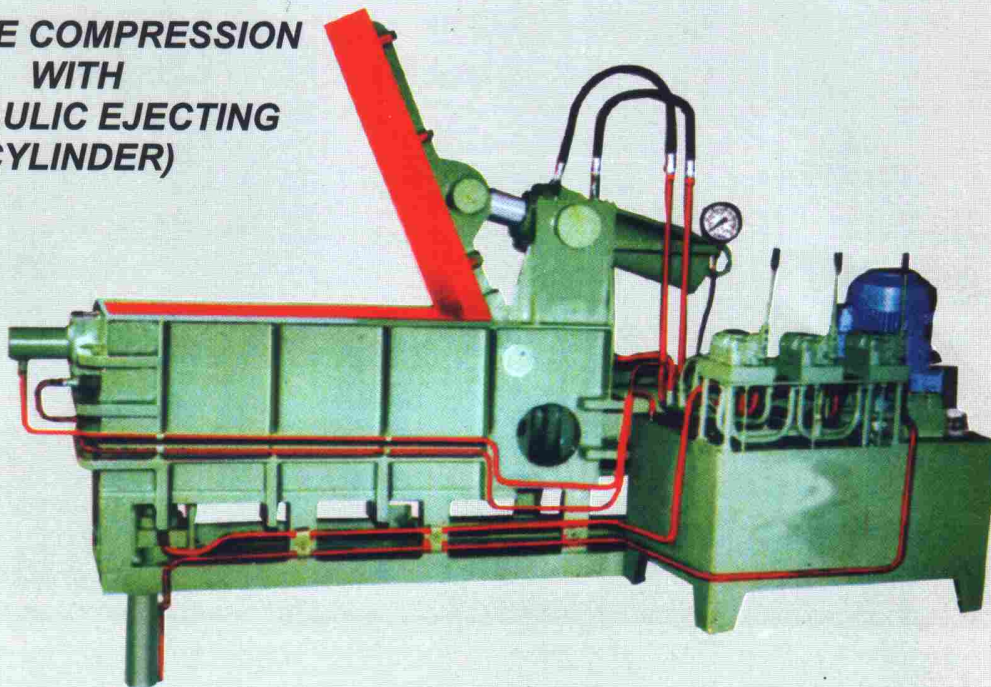


# SCRAP BALING PRESSES (DOUBLE COMPRESSION)

**(DOUBLE COMPRESSION  
WITH MANUAL DOOR)**



**(DOUBLE COMPRESSION  
WITH  
HYDRAULIC EJECTING  
CYLINDER)**





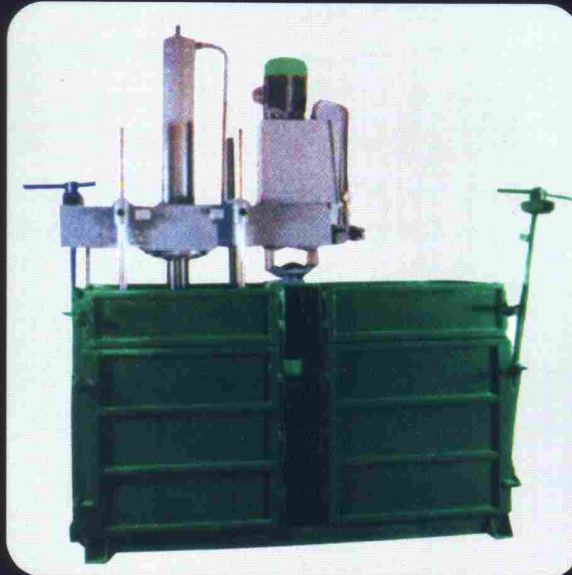
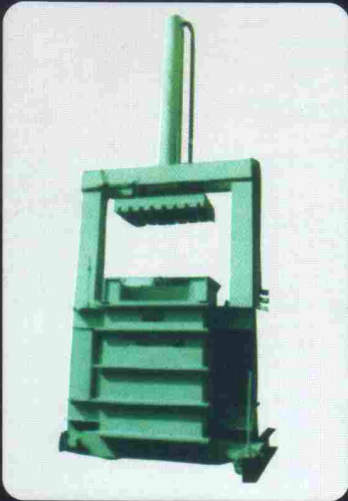
## TECHNICAL SPECIFICATION OF DOUBLE COMPRESSION BAILING PRESS

MODEL NO.	PEDCBP-200	PEDCBP-210	PEDCBP-220	PEDCBP-230	PEDCBP-240
BALING CHAMBER SIZE (H x W x L)	15"x15"x40"	20"x18"x45"	20"x20"x45"	24"x24"x50"	30"x24"x60"
BALE SIZE H x W x L (inches)	15"x8"x4-6"	18"x10"x5-7"	20"x12"x5-8"	24"x14"x8-10"	24"x15"x8-10"
WEIGHT OF THE BALE (Approx. in Kgs.)	15-25	30-40	40-50	40-55	65-80
ELECTRIC MOTOR	10 - HP	15 - HP	15 - HP	15 - HP	25 - HP
FORCE ON LID CYLINDER (Tons)	25	40	40	40	50
FORCE ON MAIN CYLINDER (Tons)	40	75	75	75	100
FORCE ON EJECTOR CYLINDER (Tons)	OPTIONAL	OPTIONAL	OPTIONAL	OPTIONAL	OPTIONAL
PRESSING TIME (Seconds)	60-70	60-70	60-70	60-70	80-90
OIL TANK CAPACITY (Ltrs.)	150	250	400	400	450
WEIGHT OF THE MACHINE Approx (MT)	2 - 2.5	3 - 3.5	3.5 - 4	4 - 4.5	5.5 - 6
OIL DRIVE PUMP	GEAR CUM PISTON PUMP				
WORKING LIQUID	HYDROL / ENCLO - 68				
BODY	FABRICATED				
OPERATION	HAND LEVER OPERATED / PUSH BUTTON OPERATED / PLC CONTROL				
HARD LINER PLATES	OPTIONAL				
WORKING PRESSURE	3000 PSI				

- Operation : PLC / Control Panel operated.
- Feeding Hydraulic Hooper may also be provided.
- Chamber bale size may be increased / decreased as per customer requirement.
- Bale ejector, front side bale ejector by gate opening cylinder may be provided for ejecting the bale.
- We reserve the right to alter the specification and dimensions without prior notice.
- Shearing blades / motor starter / control panel may also be provided.



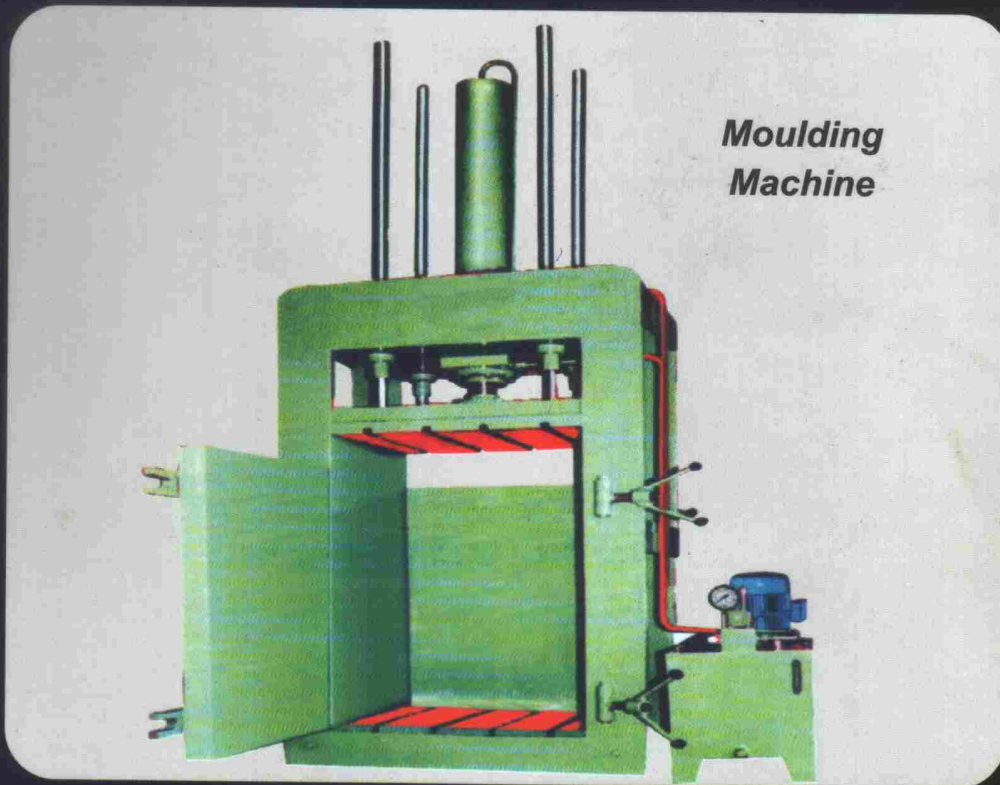
# VERTICAL SCARP BALING PRESS



MODEL NO.	PEVBP-100	PEVBP-110	PEVBP-120	PEVBP-130
BALING CHAMBER SIZE (H x W x L)	1500 mm x 600 mm x 600 mm	1500 mm x 600 mm x 750 mm	1000 mm x 750 mm x 1200 mm	1200 mm x 750 mm x 1500 mm
BALE SIZE	600 mm x 600 mm	600 mm x 750 mm	750 mm x 1200 mm	750 mm x 1500 mm
WEIGHT OF THE BALE (Approx. in Kgs.)	55 - 70	60 - 80	165 - 225	175 - 250
ELECTRIC MOTOR	7.5 H.P.	7.5 H.P.	15 H.P.	15 H.P.
IDEAL CYCLE TIME MACHINE Approx (Tons)	60	60	60	60
WEIGHT OF THE MACHINE Approx (MT)	2.5	3	5	5.5
OIL DRIVE PUMP	GEAR CUM PISTON PUMP			
WORKING LIQUID	HYDROL / ENCLO - 68	HYDROL / ENCLO - 68	HYDROL / ENCLO - 68	HYDROL / ENCLO - 68
BODY	FABRICATED			

# VERTICAL SCRAP BALING PRESS

Waste Paper, Waste Cloth, Cotton, Industrial / Agricultural Wastage, Sugar Cane, Flowers, Film Cutting Presses Etc.



We are also manufactures of Hydraulic - pneumatic cylinders, Hydraulic power pack, Hydraulic presses, Special purpose machines & Moulding machine etc.

## AWARDS :

Mr. L.C. Tolani has received the NATIONAL AWARD for the outstanding SSI entrepreneur on 30th Aug. 2000 at Vigyan Bhavan, New Delhi from the Honourable Prime Minister Shri Atal Bihari Vajpai.

Earlier in 1997 he received the BHARAT VIKAS AWARD from Dr. V. Venugopalachari, the Minister of State for Agriculture (Govt. of India).

Our Team, headed by Mr. L.C. Tolani, Consists of other Senior Directors, G.M. & Works Manager having an experience of 15 to 35 years in the fields of oil seed processing.



## PRAGYA EQUIPMENTS PVT. LTD.

110, Modi Tower, M.T.H. Compound, Indore - 452 004 (India) Phone : +91-731-4084521, 2430399  
Fax : +91-731-2430402, +91-7292-253769 Mob.: ( L.C. Tolani ) +91-98260-47777 ( L. R. Jawere ) +91-93295-45257  
e-mail : pragyahydro@Satyam.net.in • e-mail : lctolani@gmail.com • www.pragyaequipments.com

[www.pragyaequipments.com](http://www.pragyaequipments.com)